

nature International weekly journal of science

FIGURE 1. Mirror-image species and copulation in snails.

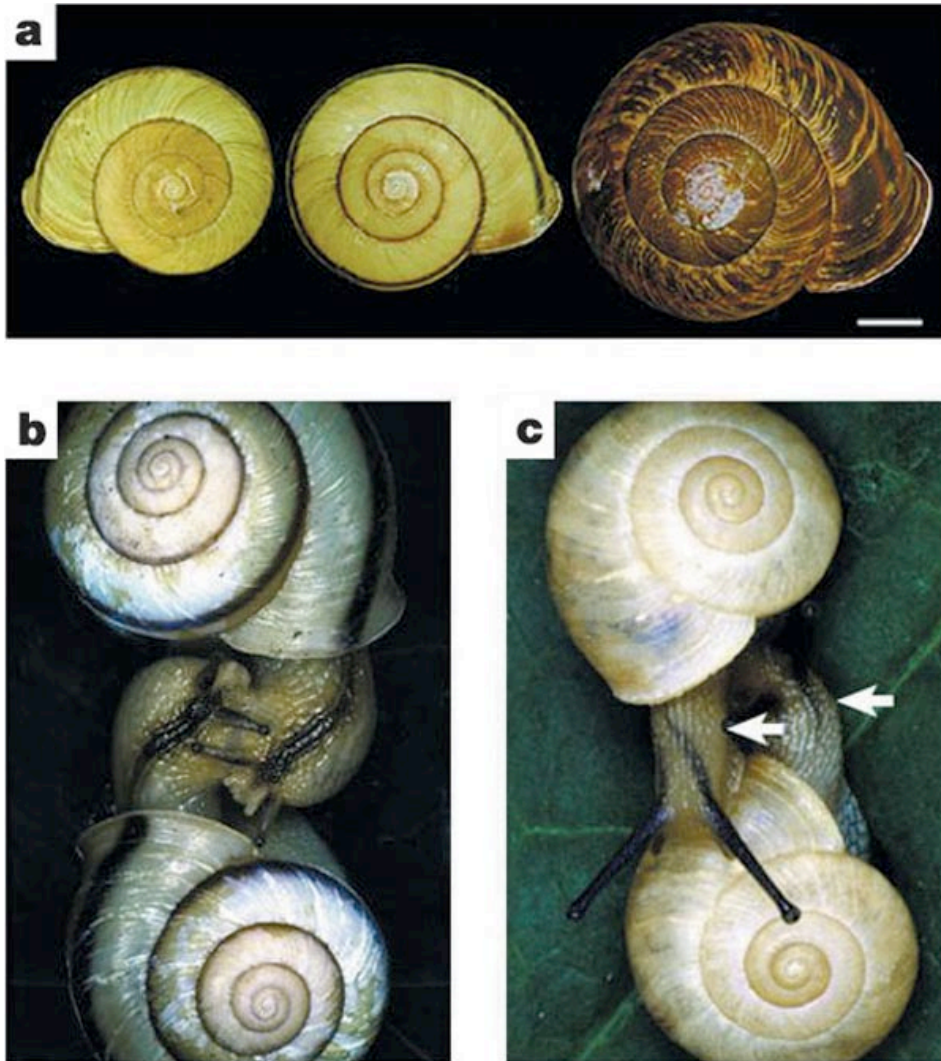
From the following article:

[Evolution: Single-gene speciation by left–right reversal](#)

Rei Ueshima and Takahiro Asami

Nature **425**, 679(16 October 2003)

doi:10.1038/425679a



a, Shells of *Euhadra*: left, *E. quaesita* (sinistral, or left-handed); middle, *E. aomoriensis* (dextral, or right-handed); right, *E. senckenbergiana* (dextral). Scale bar, 10 mm. The remarkable similarity of the shells reflects the chiral speciation of *E. aomoriensis* from *E. quaesita*, although *E. aomoriensis* has traditionally been considered to be a subspecies of *E. senckenbergiana* (see text). **b**, Successful two-way copulation between dexters of *E. congenita*. **c**, Genital mismatch between a sinistral variant (top) and an ordinary dexter (bottom) of *Bradybaena similaris*. Arrows indicate genital openings that cannot be joined.

Nature ISSN 0028-0836 EISSN 1476-4687

About NPG

Contact NPG

RSS web feeds

Help

Privacy policy

Legal notice

Accessibility statement

Nature News

Naturejobs

Nature Asia

Nature Education

Search:

© 2010 Nature Publishing Group, a division of Macmillan Publishers Limited. All Rights Reserved.

partner of AGORA, HINARI, OARE, INASP, CrossRef and COUNTER